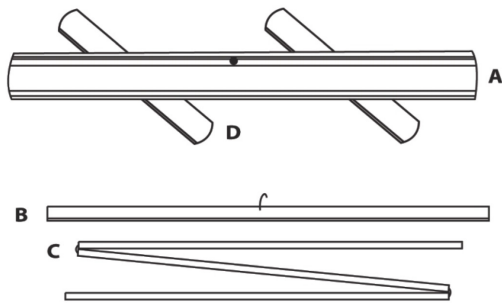


Setup Instructions

BrandStand 1 & 2™

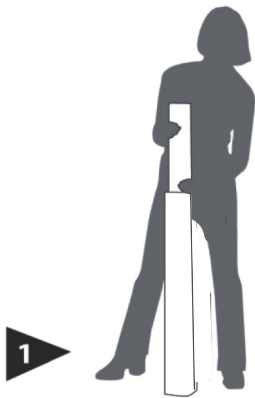


A - Display Base Unit

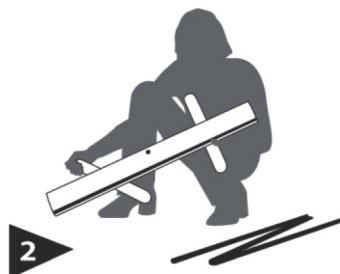
B - Snap-Lock Profile

C - Tri-Fold Pole

D - Stabilizing Feet



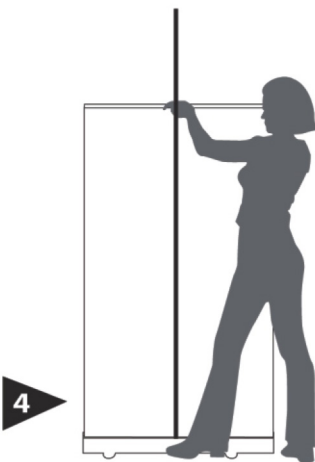
1 Remove the banner stand from the bag.



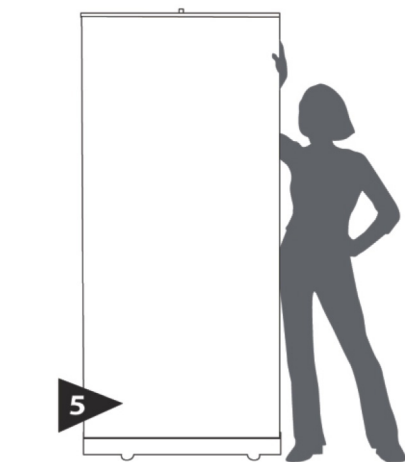
2 Turn stabilizing feet to 90° angle.



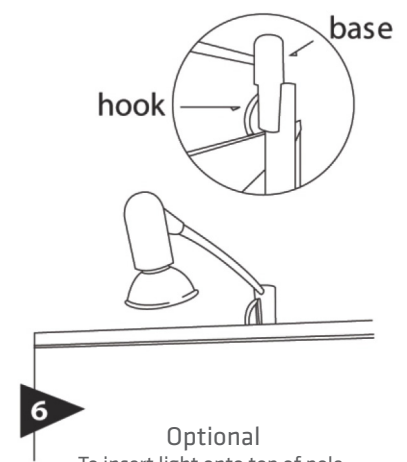
3 Assemble 3 piece pole and insert into hole located on the base.



4 Pull graphic out of base and fasten hook into top of pole.



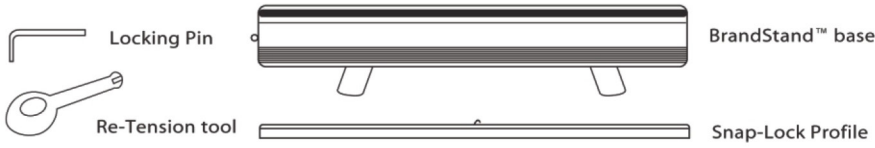
5 Place display into position. To close, unfasten top hook and firmly grip while gently retracting.



6 **Optional**
To insert light onto top of pole, align profile hook through center groove of light base.

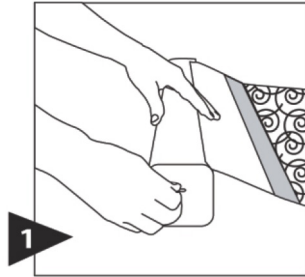
Graphic Installation

BrandStand 1 & 2™

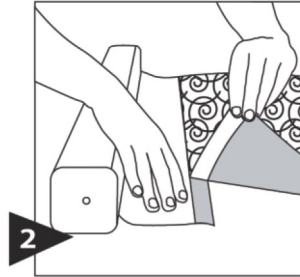


CAUTION:

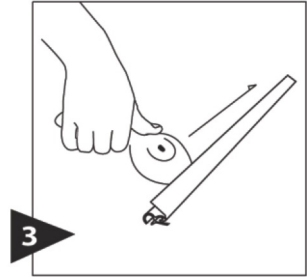
Do not remove the locking pin until the profile is attached to the graphic and the graphic is attached to the leader.



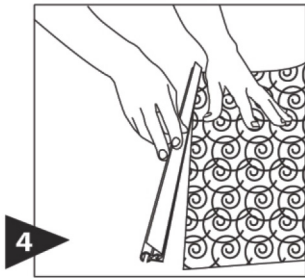
1 Pull graphic out until the leader is exposed. Insert locking pin to disable the roller.



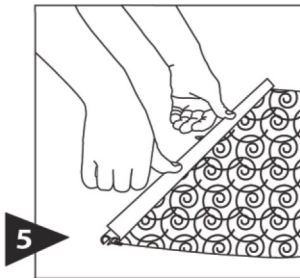
2 Remove graphic and attach new one. Place clear packaging tape over seam.



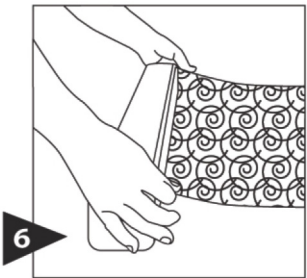
3 Use the edge of Re-Tension Tool to open the snap-lock profile.



4 Once the snap-lock profile is open, insert top portion of graphic into profile.

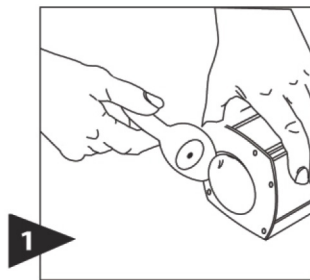


5 Apply even pressure to the snap-lock profile to lock graphic into place.

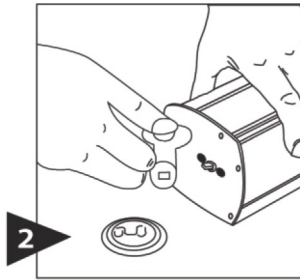


6 Grip image and unit securely and remove locking pin. Slowly guide image back into unit.

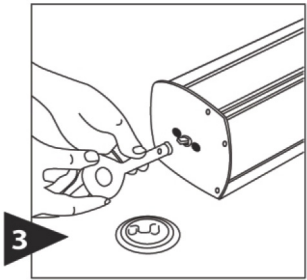
Re-Tensioning Instructions Please note that feet should be open, the pole inserted and the banner attached to the top of pole in full display view.



1 Face back of unit with the pole slot closest to you. Use the edge of the Re-Tension Tool to gently pop off the cover on the right side of unit.



2 Guide the slot of Re-Tension Tool over the exposed metal pin. Move pin from lock position into center circle. The pin can now turn for re-tensioning.



3 Holding tool firmly, twist clock-wise to re-tension. Wind 33 full turns. Return pin back to lock position. Replace cover.